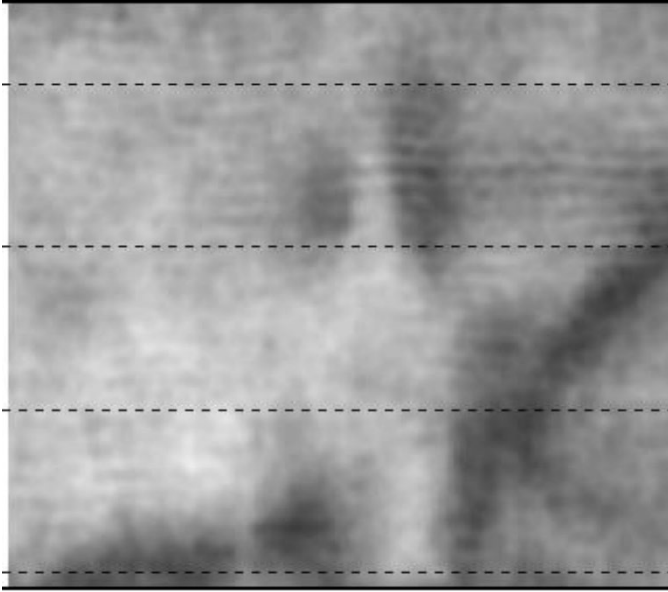
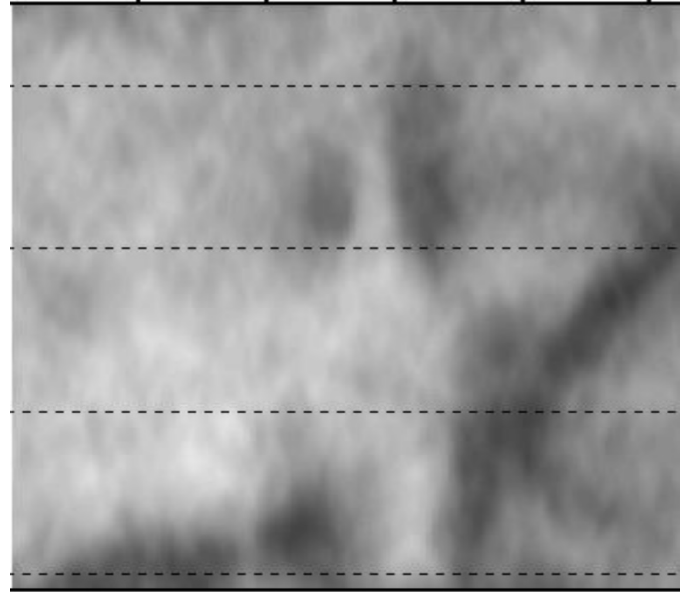


# Acquisition Footprint Removal



Time Slice Before Correction

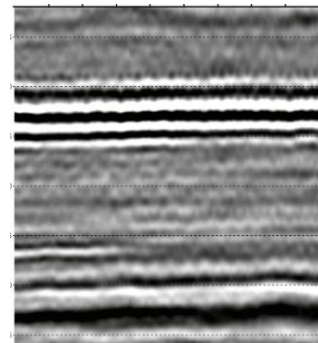


Time Slice After Correction

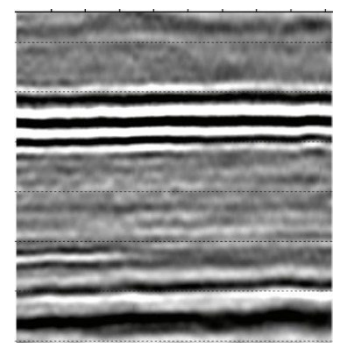
Acquisition footprints are an unavoidable consequence of the acquisition geometry and manifest themselves in multiple domains contaminating both vintage and modern acquisition spreads. A function of the receiver and source line spacing, the spatial frequencies can be predicted and attenuated.

Seitel incorporates the removal technology and techniques into their pre- and post- stack processing schemes.

- Applicable in time or depth
- Improve stack or angle amplitude extraction
- Reduce anomalous amplitude signatures
- Improve inversion data preparation



Inline Before Correction



Inline After Correction