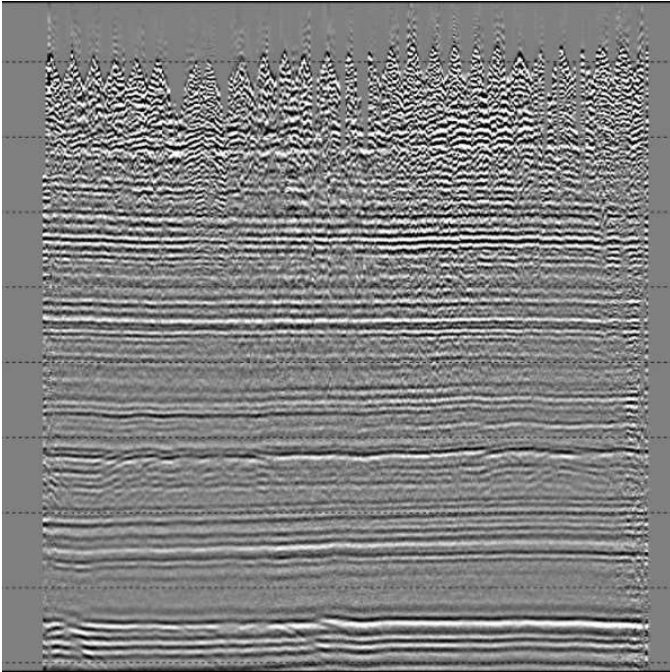


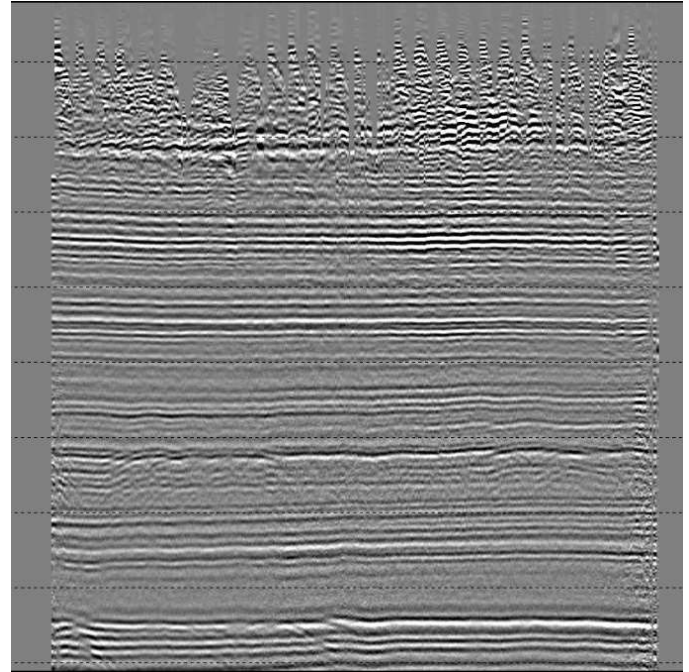
## Enhanced Pre-Imaging Denoise



Input Stack

The Permian Basin is a notorious area where a complex near surface causes a multitude of issues. Complex statics along with increased noise and lower signal can radically degrade the quality of the final data.

Using the natural acquisition Seitel predicts and attenuates the surface noise and accentuates the signal.



Denoise Stack

Effective at all levels in the section. The results are particularly apparent in the shallow. Indeed, the algorithm may be implemented in a time variant mode.

### Implemented

- Pre-final statics
- Pre-5D interpolation
- Pre-imaging

### Providing

- Improved Stack response
- Clean gathers
- AVO friendly