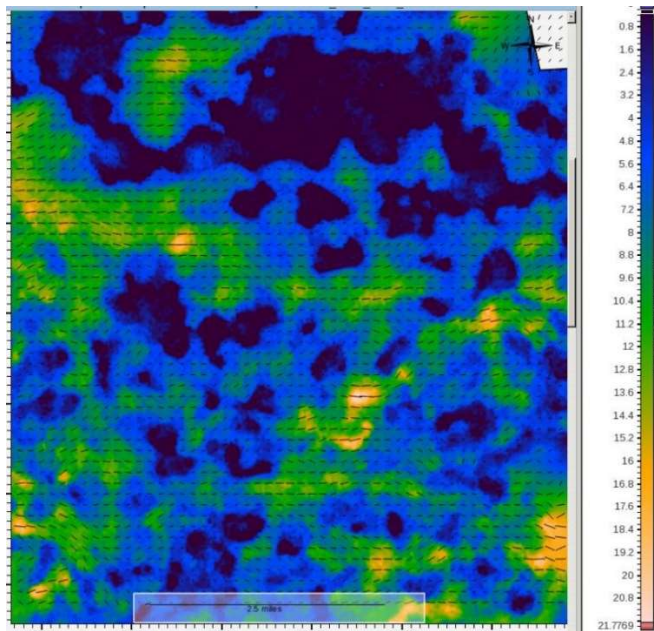


PS Converted-Wave Processing

Using 3C data acquired in the field, PS Converted-Wave Processing provides additional value to existing P-wave products. This includes shear-wave splitting analysis to detect localized fracture orientation and strength, and Γ (gamma) estimation, which is valuable in determining lithology and fluid content.

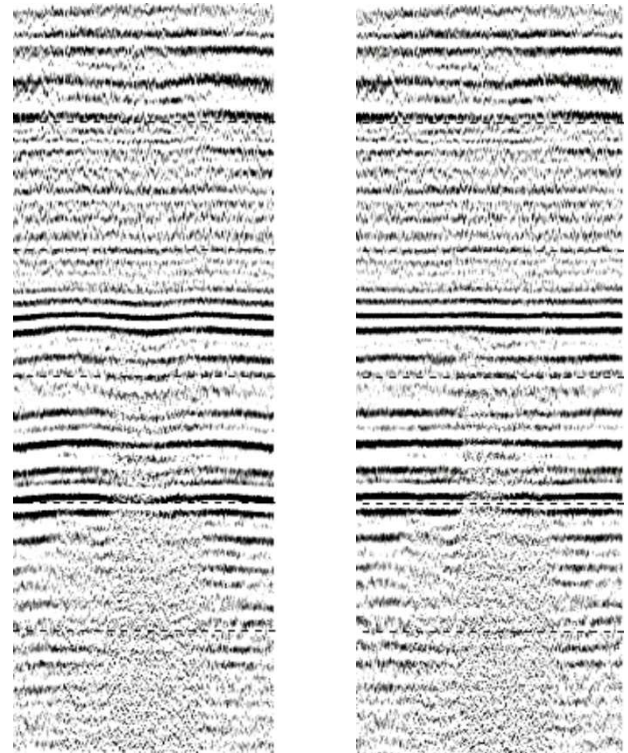
PS Processing Products

- Kirchhoff Converted-Wave Prestack Time Migration
- Shear-Wave Splitting Analysis
- Γ_{eff} and Γ_0 volumes



Shear-wave splitting time delay overlaid with azimuth vectors

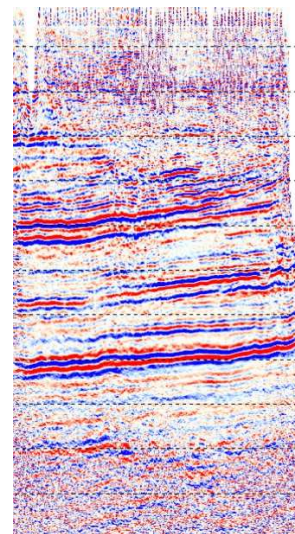
Maps of shear-wave splitting time delay (fast – slow) and azimuth (fast direction).



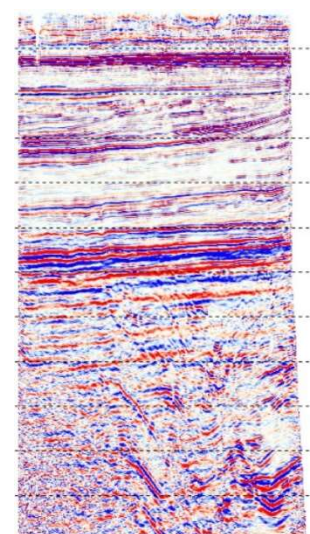
Before Correction

After Correction

Azimuthally-sorted radial supergathers from PS-data before and after shear-wave splitting correction.



PS Stack



PP Stack

PS and PP migrated stacks.