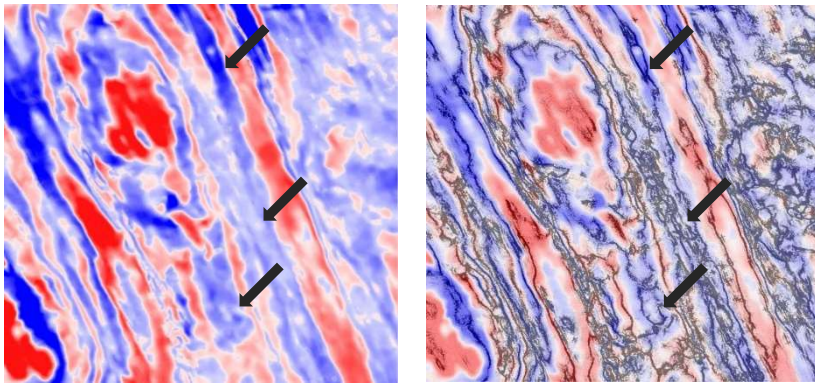


Structural Attributes

via Coherency / Curvature

The **Coherence attribute** extracts discontinuities from a seismic stack.



Depth slice of seismic amplitude

Seismic & Coherence

Flexible input options

- Time- or depth-migrated
- Partially stacked common offset or azimuth
- Frequency-limited stacks

Applications for interpretation

- Detect minor faults and fractures
- Quantify fault/fracture density
- Identify buried channels, deltas, and reefs

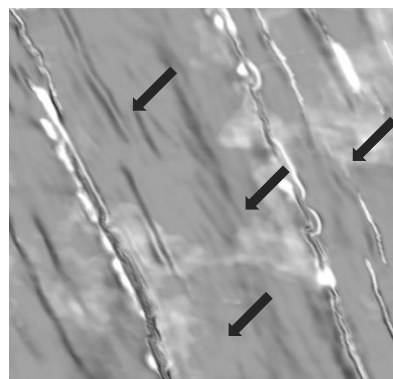
Curvature attributes emphasize the bending of reflectors in a seismic stack.

Diverse selection of curvature attributes

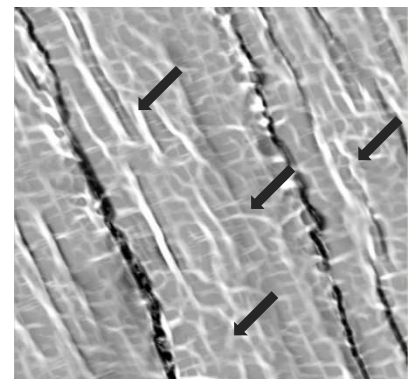
- Curvedness
- Most positive/negative curvature
- Major/minor principal curvature
- Mean/Gaussian curvature
- Dip/strike curvature
- Shape index

Applications for interpretation

- Delineate faults, fractures, and folds
- Quantify fault displacement
- Identify fault connectivity
- Classify brittle/ductile fault deformation



Horizon slice of seismic amplitude



Most negative curvature