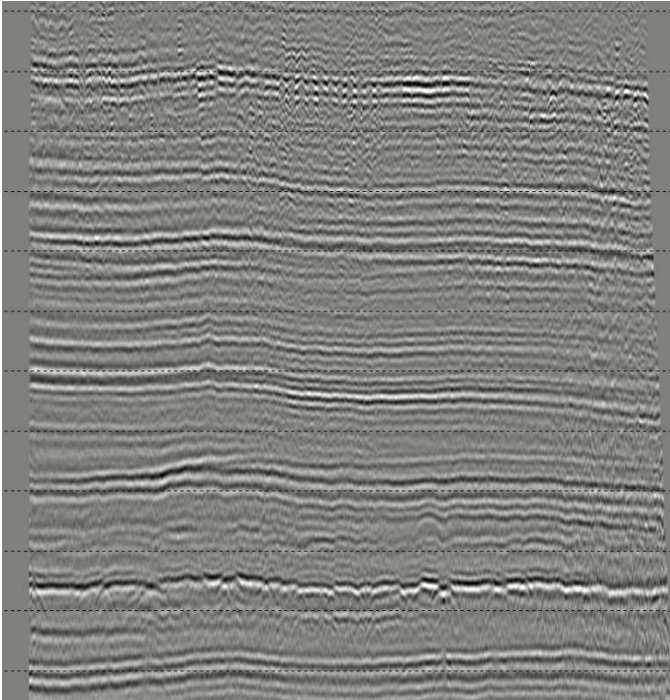
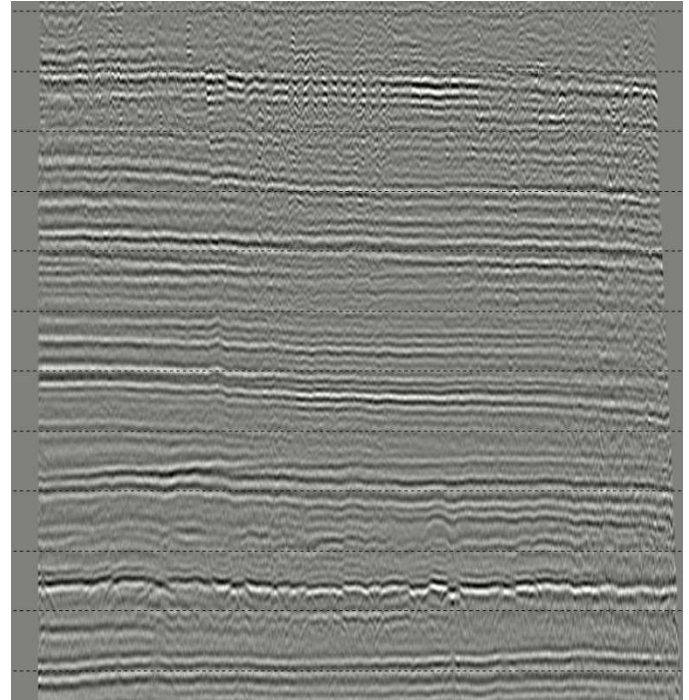


Surface Consistent Structural Static Solution

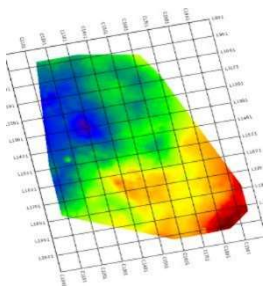


Input Stack



Corrected Stack

In highly complex near surface structural regions, the use of traditional techniques of refraction statics and residual statics break down.



Shot Static Map

Seitel implements a surface consistent solution that is data driven and structurally robust.

The subsequently derived statics can also be used to improve initial depth migration shallow velocity models.

Advantages:

- Effective at removing subtle or complex statics.
- Run prior to residual statics.
- Pre-5D interpolation / noise attenuation.
- Improved velocity analysis.
- Surface consistent.